

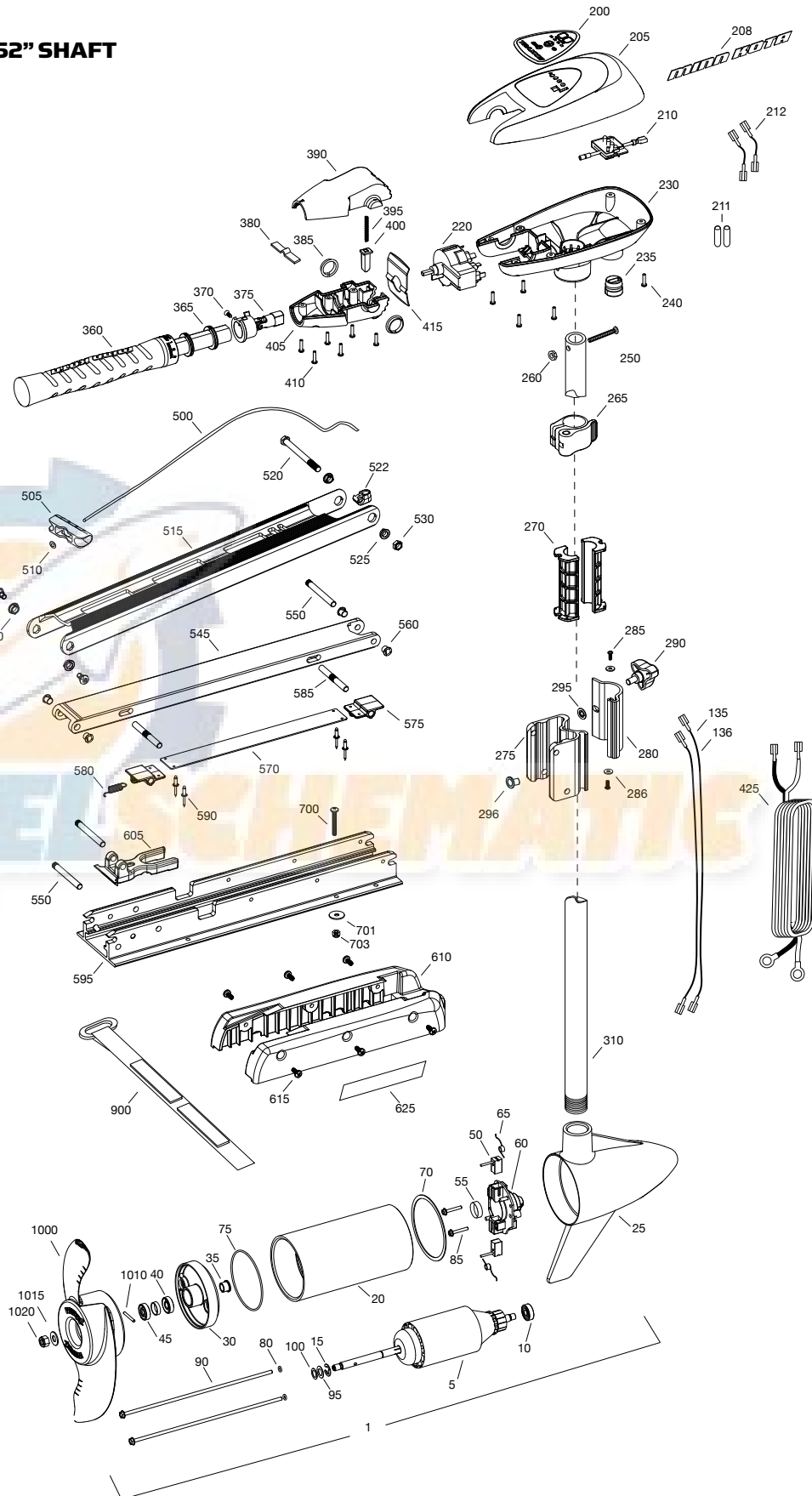
PARTS DIAGRAM

Motors with serial number beginning with "P" - 2 Year Warranty

RIPTIDE SE 46

46 LBS THRUST - 12 VOLT - 52" SHAFT

42 AMPS



RIPTIDE SE 46

46 LBS THRUST - 12 VOLT - 52" SHAFT

ITEM	QTY	PART NUMBER	DESCRIPTION	ITEM	QTY	PART NUMBER	DESCRIPTION	ITEM	QTY	PART NUMBER	DESCRIPTION
1	1	2097079	12V MOTOR 52" SW	250	1	2033403	SCREW – #10-24 X 1-3/4" PPH SS	535	2	2263510	SHOULDER BOLT
5	1	2-100-117	ARMATURE ASSEMBLY	260	1	2333101	NUT – 10-24, NYLOCK, SS	540	2	2267302	BUSHING, SS
10	1	140-010	BEARING	265	1	2991521	CAM LOCK/DEPTH COLLAR ASSY	545	1	2994343	LOWER ARM, STD, SW
15	1	788-015	RETAINING RING	270	2	2261537	HINGE SLEEVE	550	3	2260504	PIVOT PIN, SS
20	1	2-200-301	CENTER HOUSING ASSEMBLY	■	1	2991839	HINGE & DOOR ASSEMBLY [275-295]	560	4	2266002	BUSING, NYLINER 3/8
25	1	2-300-337	BRUSH END HOUSING ASSEMBLY	275	1	2261894	HINGE BASE ASSEMBLY	■	1	2993811	LATCH STRAP ASSY [570-590]
30	1	2-400-337	PLAIN END HOUSING ASSEMBLY	280	1	2261898	HINGE DOOR	570	1	2263605	LATCH STRAP
35	1	144-049	FLANGE BEARING	285	2	2332100	SCREW – #8-32 X 3/8, SS	575	2	2261902	LATCH BRACKET
40	1	880-003	SEAL	286	2	2261732	WASHER – #8 NYLON	580	1	2262709	SPRING, LATCH PIN, SS
45	1	880-006	SEAL WITH SHIELD	290	1	2260906	KNOB	585	2	2260502	LATCH PIN, SS
50	2	188-036	BRUSH	295	1	2261728	RETAINING WASHER	590	4	2268602	RIVET – 1/8 SS
55	1	725-050	PAPER TUBE	310	1	2202014	52" TUBE COMPOSITE	595	1	2266503	BOWPLATE W/ INSERT, STD, SW
60	1	738-036	BRUSH PLATE ASSEMBLY	■	1	2990956	HANDLE ASSY, 5SPD [360-410]	605	1	2261544	YOKE
65	2	975-040	BRUSH SPRING	360	1	2990457	GRIP/HANDLE ASSY, 5SPD [360-375]	610	1	2263906	MOTOR REST, STD, SW
70	1	337-036	GASKET	365	2	2060015	HANDLE BEARING	615	6	2332104	SCREW – 1/4-20 X 5/8, SS
75	1	701-081	O-RING, MOTOR	370	1	2063405	SCREW – #6 PFH SS	625	2	2265668	MOTOR REST DECAL
80	2	701-008	O-RING, THRU-BOLT	375	1	2994091	YOKE / SPIDER ASSY, 5SPD	■	1	2994830	BAG ASSEMBLY
85	2	830-007	SCREW – #8-32	380	1	2302742	DETENT SPRING, OFF	700	6	2263462	SCREW – 1/4-20 X 3 1/2" PPH, SS
90	2	830-042	THRU-BOLT	385	2	2060005	BEARING, HANDLE PIVOT	702	6	2261713	WASHER – 1/4 SS
95	2	990-067	STEEL WASHER	390	1	2060900	HANDLE PIVOT, TOP	703	6	2263103	NUT – 1/4-20 NYLOCK, SS
100	2	990-070	WASHER, NYLATRON	395	1	2302745	SPRING, RELEASE BUTTON	900	1	2263805	HOLD DOWN STRAP
135	1	640-006	BLACK LEADWIRE	400	1	2063700	RELEASE BUTTON	■		1378131	PROPELLER KIT WW2
136	1	640-115	RED LEADWIRE	405	1	2060905	HANDLE PIVOT, BOTTOM	■		2994875	PROPELLER BAG ASSY
■		2888460	SEAL AND O-RING KIT	410	6	2303412	SCREW – #6 X 5/8 SS	1000	1	2091160	PROPELLER WW2
200	1	2195658	C-BOX COVER DECAL	415	1	2062715	SPRING, HANDLE PIVOT	1010	1	2092600	SMALL DRIVE PIN
205	1	2060296	CONTROL BOX COVER	425	1	2992522	LEADWIRE ASSY	1015	1	2151726	SMALL PROP WASHER
208	2	2325666	MINN KOTA DECAL	■	1	2991718	MOUNT, ASSEMBLY SHORT [270-295, 500-625]	1020	1	2198400	PROPELLER ANODE
210	1	2074080	BATTERY METER, 12V SW	500	1	2251601	ROPE				
211	1	2305415	SHRINK TUBE	505	1	2150400	PULL GRIP				
	1	2305410	SHRINK TUBE	510	1	2151700	WASHER				
212	1	2070304	WIRE, BATTERY METER, BLACK	515	1	2264271	UPPER ARM, SHORT				
■	1	2070305	WIRE, BATTERY METER, RED	520	1	2263506	BOLT, 3/8-16 X 4.25, SS				
220	1	2064028	SWITCH 5 SPEED	522	1	2262310	ROPE GUIDE				
230	1	2062506	CONTROL BOX 5 SPD, SW	525	2	2267303	UPPER BUSHING, 3/8"				
235	1	2062905	STRAIN RELIEF	530	1	2263115	NUT – 3/8-16 SS				
240	6	2303412	SCREW – #6 X 5/8 SS								

■ THIS ITEM IS PART OF AN ASSEMBLY.
 *THIS ITEM IS PART OF A KIT AND ONLY LISTED FOR VIEWING PURPOSES.

NOTE: This is a universal, multi-voltage diagram. Double check your motor's voltage for proper connections. Over-Current Protection Devices not shown in this illustration.

FIVE-SPEED SWITCH

